

## History of Shisei Gakusha

1912.6 At, Kanda Iwamoto-cho, Tokyo, Sir. Kyuichiro Inenaga, the founder of Shisei-Gakusha took care of several juveniles from an emergency shelter run by Salvation Army.  
 1925 Named "Shisei Gakusha" and authorized as a private organization for juvenile shelter under the Shounen-Hou (Juvenile Act), enacted  
 1941 Tachikawa Branch was established  
 1942.10.6 Authorized as a foundation (nonprofit organization), Mr. Kyuichiro Inenaga was installed as the first chairman of the board of directors  
 1945.4.13 Ikebukuro campus was burned down by war damage. Kept on business in Tachikawa as main campus.  
 1945.12 Musashino Branch was established in Hoya, Tokyo (Nishi-Tokyo-shi)  
 1948.3.31 Juveniles shelter was closed by law amendment  
 1949 In April 8, Yanagibashi Hoikuen in Hoya, and in December 1, Shisei Hoikuen in Tachikawa, , nursery schools for baby and infants, were established.  
 1951.5.25 Shisei Rojin Home, a residential facility for elderly, was established in Tachikawa  
 1951.12.20 Shisei Gakuen, a residential facility for children, was established in Tachikawa.  
 1952.5.20 Organizational change from private foundation to social welfare foundation was accomplished by the enactment of Social Welfare Law.  
 1955.7.1 Showa-en, a residential facility for elderly, was established in Hoya, Tokyo.  
 1959.2.27 Shisei Dai2 Hoikuen, nursery school for baby and infants, was established in Hino, Tokyo.  
 1975.11.1 Ryokujyu-en, a residential facility for elderly who need care, and the Care Center for elderly, first established center in Japan, were established in Hoya.  
 1977 In March 30, Shisei Tokubetu-yogo Rojin Home, a residential facility for elderly who need care, and in October 17a day care center for elderly were established in Tachikawa.  
 1979.10.1 Sayuri Hoikuen, , nursery school for baby and infants, was established in Tachikawa.  
 1982.10.1 Mr. Hotori, Kanshin, the chairman of the board of directors was selected as an honorary citizen of Tokyo.  
 1983.4.1 Shisei Nurse Aiji Center, a daycare center for infants of families working at seven Tokyo Public Hospitals, was opened.  
 1985.4.1 Showa-en was renewed as St Maire Showa, a residential facility and a day care center for elderly who need care.  
 1990.4.1 Midori-no-en, a residential facility and a day care center for elderly who need care, was opened in Itabashi, Tokyo.  
 1990.10.1 Silver Peer Shisei, an apartment for elderly, was established in Tachikawa.  
 1993.4.1 Kashiwa Daycare Center for elderly was opened in Tachikawa.  
 1994.12.1 Kichijyoji Nursing Home, a home care center, and Kichijyoji

Rojin Home for elderly were opened in Musashino, Tokyo.  
 1996.4.1 Suwa-no-mori Hoikuen, nursery school for baby and infants, was opened in Tachikawa.  
 1997.6.1 Work Center Makoto Club, a vocational training center for people with intellectual disabilities, was established.  
 1998.4.1 New organization, Shisei Gakusha Tokyo, was established and business in Hoya were transferred to the organization.  
 2000.4.1 Shisei Kiitos Home (small group residential facility) and a day care center for elderly who need care were established in Tachikawa.  
 2001.4.1 Manganji Branch of Shisei Dai2 Hoikuen, nursery school for baby and infants, was established in Hino.  
 2001.10.1 Work Center Makoto Club was authorized by Tokyo government as a social welfare service.  
 2002.4. Manganji Branch of Shisei Dai2 Hoikuen was independently opened as a day care center.  
 2003.4.1 Shisei Gakuen opened Hino-Kids Group Home in Hino city, and started Group Home Besed Residential Care Project. in Hino community.  
 Shisei Rojin Home was renewed as Shisei Home Suomi, a care house and group home for elderly.  
 2004.4.1 Shisei Gakuen was consigned short term residents program for children from Hino city..  
 Honcho Branch of Shisei Dai2 Hoikuen was established in Hino.  
 Shisei Home Komi Caremanagement Center and Home-helper station was established in Tachikawa.  
 Shisei Home was consigned two Vocational Center for elderly in Musashino city and Fuchu city from Tokyo prefecture.  
 2006.3.31 Shisei Nurse Aiji Center was closed of the business.  
 2006.4.1 Shisei Taiyo-no-ko Hoikuen, nursery school for baby and infants, was opened in front of Hino station.  
 Suwa-no-mori Hoikuen was established as an agency based business from consignment business of Tachikawa city.  
 Shisei Care Center Motomachi opened as a day care center for elderly in Kokubunji city.  
 2007.4.1 Shisei Azuma Hoikuen, nursery school for baby and infants, was opened in Hino.  
 Shisei Care Center Motomachi was opened in Kokubunji.  
 2007.7.1 Shiseihome KOMI Care Management Center was closed of the business.  
 2007.10.1 Shisei Komi Home, day care center for elderly, was opened.  
 2008.3.1 Shisei Active Center , day care center for elderly, was opened.  
 2009.4.1 Intergenerational Exchange and Complex Type Institution, "Shisei-home Minna", was established at Kokubunji city, Tokyo..  
 Seiiku Shisei Hoikuen, nursery school for baby and infants, was opened in the campus of National Medical Center for Children and Mothers.  
 2009.10.1 Shisei Daichi Children's Home, a residential facility for children, was established in Tachikawa, Tokyo.  
 2010.4.1 The Umeagaoka Branch of Seiiku Shisei Hoikuen was established in Setagaya, Tokyo.



Shisei Gakusha will celebrate the 100th anniversary in 2012.

# Shisei Gakusha Tachikawa

Social Welfare Foundation

## Our Mission

Shisei Gakusha Tachikawa is a human service agency providing residential services, emergency assistance, daycare, social services and recreational activities for infants, children, youth and elderly as well as vocational training for intellectually disabled persons in the western part of Tokyo, Japan.

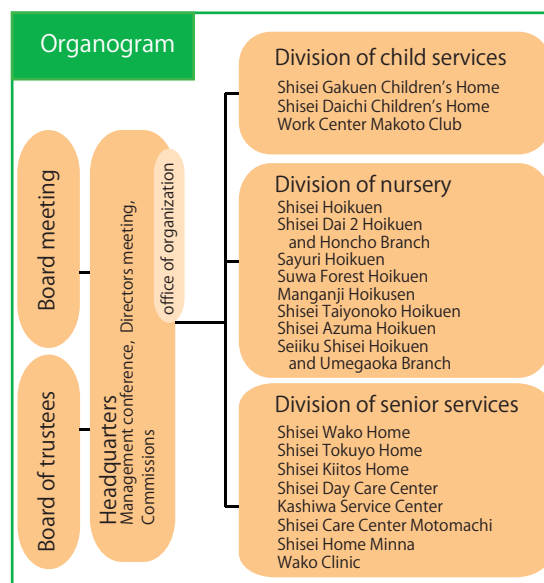
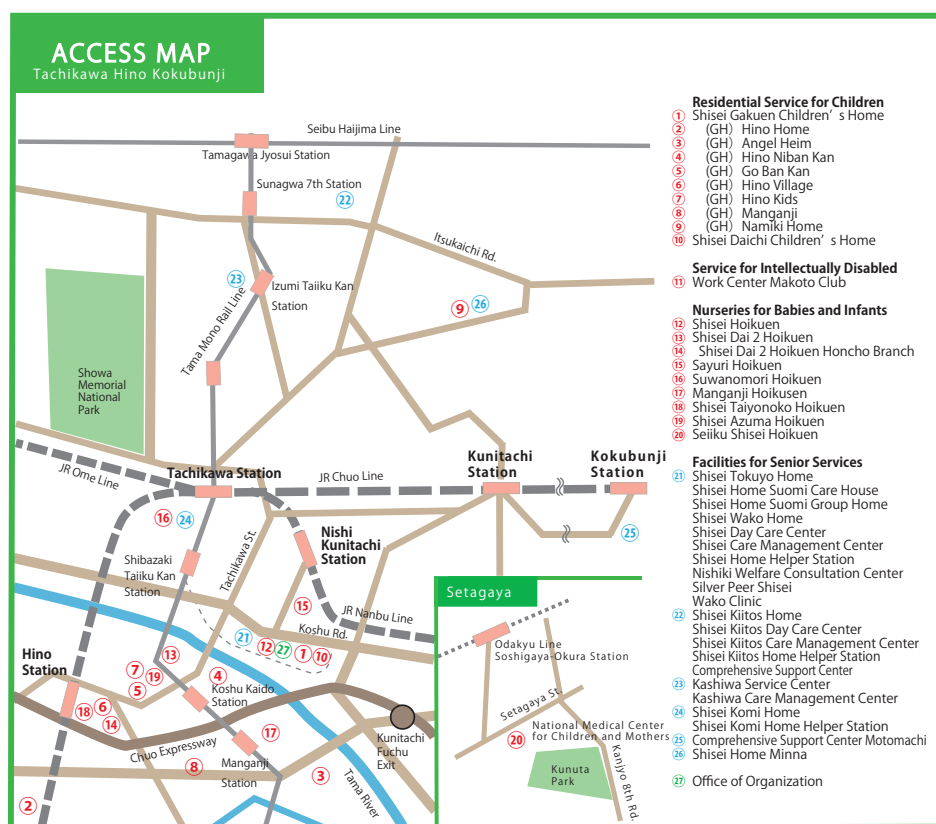
We make efforts to support individuals of our service users, and develop the social service quality in our community with professionals, organizations, institutions, groups, and volunteers.

## Our Bilief

Sincerity, honesty, integrity mind called "Makoto no Kokoro" is the most important and fundamental belief for us to provide human services.



Goho Rensha and Makono no Kokoro



**Shisei Gakusha Tachikawa**  
 6-28-15 Nishiki-cho Tachikawa-shi  
 Tokyo, 190-0022, Japan  
 URL <http://www.gakusha.org>  
 Office of organization  
 TEL 042-527-7734 / FAX 042-527-7838  
 Email [honbu@gakusha.org](mailto:honbu@gakusha.org)

2010.4.1  
 PRINTED WITH SOY INK

# With Makoto no Kokoro

## Services for Seniors

Shisei Home Senior Service Center  
TEL 042-527-0031 FAX 042-527-2646 <http://www.shisei.or.jp>

### Tokuyo Homes

#### Shisei Tokuyo Home

150 people  
TEL 042-527-0032



Persons whose required care level according to the support requirement certification of long-term care insurance is "care level 1" or above

#### Shisei Kiitos Home

70 people  
TEL 042-538-2323



Unit type home

### Shisei Home Minna

Shisei Home Minna is a composite-type facility for elderly and children.



- Multi-purpose facility
- Tokuyo Home
- Group Home for dementia
- Flat for elderly "Raku"
- Group Home for children
- Welfare consultation

### Subsidized home for the elderly

Persons who have difficulties living at home due to the home environment, housing conditions, etc.

**Shisei Wako Home** 50 people  
TEL 042-527-0034



### Housing Service

#### Silver Peer Shisei

15home  
TEL 042-527-0033  
Persons living alone who are self-sufficient in daily life.

### Short Stay

Persons whose required care level according to the support requirement certification of long-term care insurance is "care level 1" or above

**Shisei Tokuyo Home** 21people

**Shisei Kiitos Home** 23people



### Day Services

Persons whose required care level according to the support requirement certification of long-term care insurance is "support required level 1" or above

**Shisei Day Care Center** 40people  
TEL 042-527-0207

**Shisei Komi Home** 9people  
TEL 042-527-9553

**Shisei Active Center** 10people  
TEL 042-527-0436

**Shisei Kiitos Day Service Center** 54people  
TEL 042-538-2322

**Kashiwa Service Center** 42people  
TEL 042-535-5510

**Shisei Care Center Motomachi** 32people  
TEL 042-301-7001



### Care Management for the elderly

Persons whose required level of care according to the support requirement certification of long-term care insurance is "care level 1" or above and who desire in-home care services

**Shisei Care Management Center**  
TEL 042-527-0321

**Shisei Care Center Motomachi**  
TEL 042-301-5001

**Shisei Kiitos Care Management Center**  
TEL 042-538-2321

**Shisei Kashiwa Care Management Center**  
TEL 042-535-5510

**Wako Clinic** TEL 042-527-0037

Persons in need of medical care

### Care House

**Shisei Home Suomi Care House** 38rooms 50people

TEL 042-527-0033

Persons who are self-sufficient in daily life



### Group home for dementia

**Shisei Home Suomi Group Home**

9 people

Persons with mild dementia whose required care level is between level 2 and level 1-2



Cooking

### Home Help Service

Persons whose required care level according to the support requirement certification of long-term care insurance is "support required level 1" or above

**Shisei Home Help Station**

TEL 042-527-0057

**Shisei Home Komi Home Help Station**

TEL 042-548-0753

**Shisei Kiitos Home Help Station**

TEL 042-538-2321

### Comprehensive support

Persons who need consultation concerning personal care of the elderly, etc.

**Tachikawa Hokubu Naka Saiwai Regional Comprehensive Support Center**

TEL 042-538-2339

**Home Care Support Center Motomachi**

TEL 042-301-5001

### Welfare consultation

Persons who need consultation concerning personal care of the elderly, etc.

**Tachikawa City Nishiki Welfare Consultation Center**

TEL 0120-515-817/042-527-0321

**Shisei Komi Home** TEL 042-527-9553

Elderly persons and local residents who tend to stay at home.



## Services for Children and People with Disabilities

Division of Child TEL 042-524-2601 <http://www.shiseigakuen.org>  
Division of Nursery <http://www.shisei-nonna.jp>

### Residential Care for Children

The purpose of Children's Home is, as started in the Child Welfare Law, to provide residential care services to dependent children (2-18 aged) such as orphans, who are abandoned, abused, and those who were deprived of parental care. Since Oct.1, 2009, Shisei Daichi Children's Home was opened for babies and young children.

**Shisei Gakuen** 82children

**Main Campus**  
TEL 042-524-2608



**Shisei Gakuen**

**Group Homes** 8 places



**Shisei Daichi Children's Home**

30 children  
TEL 042-540-0088



### Occupational Programs for intellectual Disabilities

**Work Center Makoto Club**

21 people TEL 042-521-3988

Provided life skill training and occupational training such as making cookies and breads.



### Nurseries for babies and Infants

**Shisei Hoikuen** 120 children TEL 042-524-1500

Open 7 am to 8 pm for 8 th weeks new born babies until before the school age. Montessori Educational System contribute for children's independence and self-esteem.



**Sayuri Hoikuen** 100 children TEL 042-527-7924

Open 7:30 am to 7 pm for 8 th weeks new born babies until before the school age. Montessori Educational System contribute for children's independence and self-esteem.



**Suwa Forest Hoikuen** 86 children TEL 042-522-2589

Open 7 am to 7 pm for 8 th weeks new born babies until before the school age. Montessori Educational System contribute for children's independence and self-esteem.



**Shisei Azuma Hoikuen** 45 children TEL 042-533-6686

Open 7 am to 8 pm for 8 th weeks new born babies until before the school age. Montessori Educational System contribute for children's independence and self-esteem.



**Shisei dai 2 Hoikuen** 106 children

TEL 042-581-0446

Open 7 am to 7 pm for 8 th weeks new born babies until before the school age. Montessori Educational System contribute for children's independence and self-esteem. Hinohoncho Branch is located close to main campus. Shisei Smile is the community program for mother and babies.



Main Campus

Hinohoncho Branch

**Manganji Hoikuen** 45 children

TEL 042-587-0592

Open 7 am to 7 pm for 8 th weeks new born babies until before the school age. Montessori Educational System contribute for children's independence and self-esteem.



**Shisei Taiyo-no-ko Hoikuen** 60 children

TEL 042-586-6433

Open 7 am to 8 pm for 8 th weeks new born babies until before the school age. Montessori Educational System contribute for children's independence and self-esteem. Located in front of the Hino Station of JR.



**Seiiku Shisei Hoikuen** 100 children TEL 03-5727-2252

Open 7 am to 8 pm for 8 th weeks new born babies until before the school age. Opening 24 hours is the feature of this nursery established in the place of the national hospital. Montessori Educational System contribute for children's independence and self-esteem.



### Board of Directors and Trustees term of boards and trustees 6/1/2009 ~ 5/31/2011

**Chairman**  
TAKAHASHI, Toshikazu

**Executive Director**  
HASHIMOTO, Masaaki  
INENAGA, Katsuyuki

**Honorary Advisors**  
NAKAMURA, Yuichi

MITA, Tsurukichi  
MACHIDA, Eiichi  
IGARASHI, Eiji  
SEKIOKA, Takeji

**Boards**  
FUKUSHIMA, Toshio  
KANEKO, Tamotsu  
MOROOKA, Mieko

YANO, Yuichi  
OMURA, Hironaga  
KOYAMA, Hiroshige  
WAKAHOI, Toru

**Auditors**  
UMEDA, Takahiro  
NAITO, Hiroshi

**Trustees**  
TAKAHASHI, Hisao  
HASHIMOTO, Masaaki  
INENAGA, Katsuyuki  
WAKAHOI, Toru  
KANEKO, Tamotsu  
MORIMOTO, Yoshikii  
YANO, Yuichi  
HAYASHI, Aiko

ISHIHARA, Reiko  
NISHIMURA, Kazuo  
OSADA, Tome  
SUGITA, Eiichi  
WATANABE, Akitaka  
MOROOKA, Emiko  
Matsurida, Shihomi  
OKADA, Kiyoshi  
KOYAMA, Hiroshige

ISHIDA, Yoshiaki  
OOMURA, Hironaga  
ASAHI, Hiroyuki  
YOSHIGAMI, Keiko